

SMART STEAM TRAP

MODEL
STC-F™
DN 25-DN 100

DESCRIPTION

The SMART STC-F™ Flanged Venturi Steam Trap is designed for high-load process applications including heat exchangers, reboilers, process columns, with capacity up to 220 000 lbs/hr or 100 000 kg/hr.

The SMART STC-F™ Flanged Venturi Steam Trap has a removable venturi insert. It is recommended that a strainer is fitted upstream of the trap.

CERTIFICATION

Manufacturer's test report is available with this product. Additional certification requirements to be stated at time of order.

SIZES AND CONNECTIONS

DN25 (1") - DN100 (4") Flanged BS 4504, PN16 - PN100
ASME B16.5, 150 - 1500

GUARANTEE

20 year product guarantee as per standard terms and conditions.



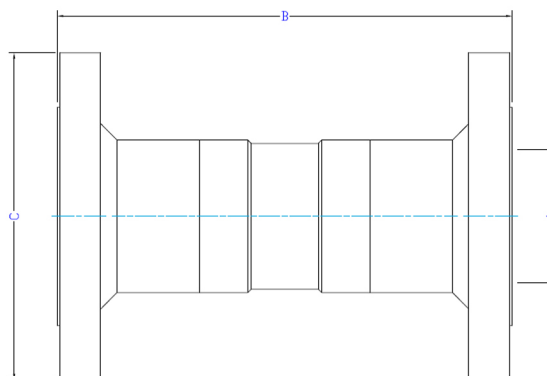
PRESSURE / TEMPERATURE LIMITS

PMA (Maximum Allowable Pressure)	250 bar g (3625 psi g)
TMA (Maximum Allowable Temperature)	550°C (1022°F)
PMO (Maximum Operating Pressure)	200 bar g (2900 psi g)
TMO (Maximum Operating Temperature)	550°C (1022°F)
Cold hydraulic test pressure	375 bar g (5438 psi g)

DIMENSIONS AND WEIGHTS

SIZE	CONNECTION	A	B	C	WEIGHT
DN25 (1")	Flanged	26.7 mm / 1.05 in	160 mm / 6.29 in	123.9 mm / 4.87 in	4.4 kg / 9.7 lbs
DN40 (1,5")	Flanged	40.9 mm / 1.61 in	230 mm / 9.05 in	155.4 mm / 6.11 in	8.6 kg / 18.9 lbs
DN50 (2")	Flanged	52.6 mm / 2.07 in	230 mm / 9.05 in	165.1 mm / 6.5 in	10.5 kg / 23.1 lbs
DN65 (2.5")	Flanged	62.7 mm / 2.47 in	280 mm / 11.02 in	190.5 mm / 7.5 in	12.5 kg / 27.55 lbs
DN80 (3")	Flanged	78.0 mm / 3.07 in	280 mm / 11.02 in	209.5 mm / 8.24 in	16.5 kg / 36.3 lbs
DN100 (4")	Flanged	102.0 mm / 4.03 in	280 mm / 11.02 in	254.0 mm / 10 in	22.5 kg / 49.6 lbs

* trap can be customized per custom F/F dimensions



SMART Valves Inc.

USA Division: +1 833 775 7888

EU Division: +32 38081549

info@smartvalvesinc.com



SMART™
VALVES

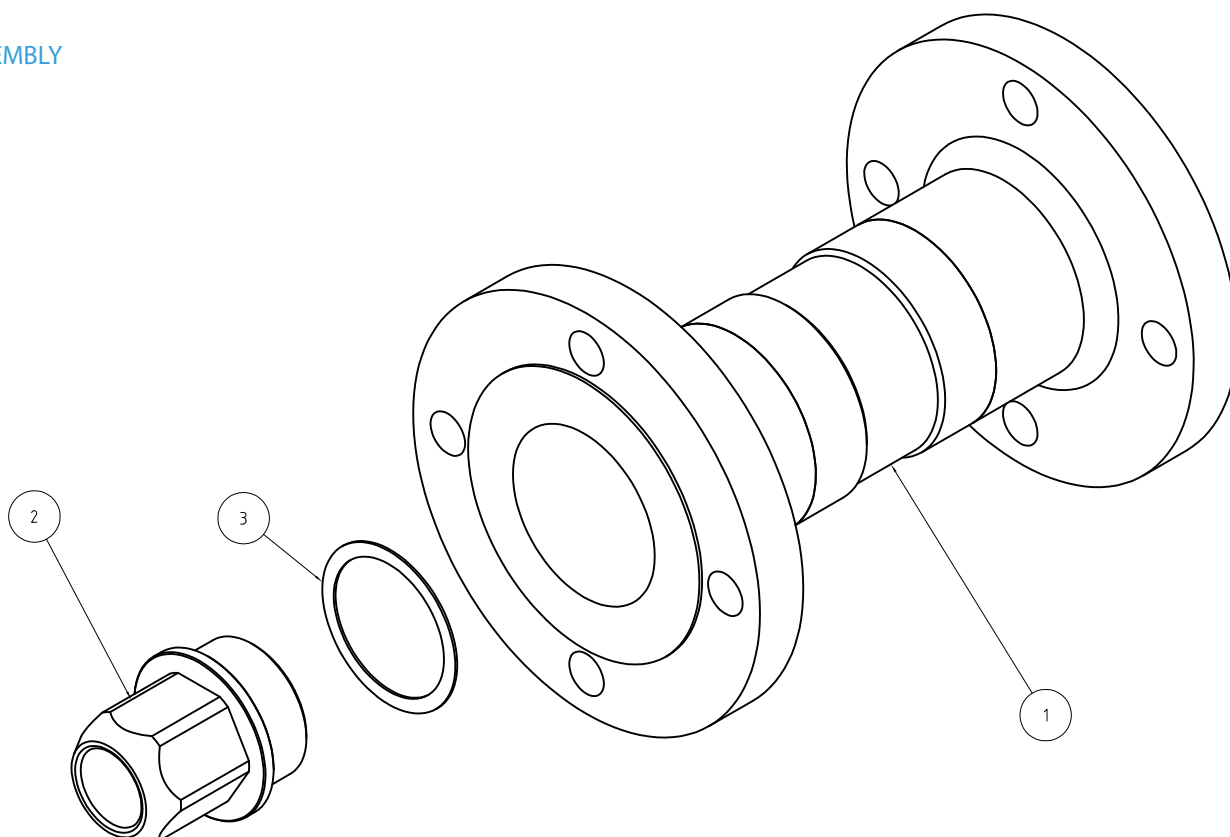
SMART STEAM TRAP™

RELIABILITY SIMPLICITY SUSTAINABILITY

SMART STEAM TRAP

MODEL
STC-F™
DN 25-DN 100

ASSEMBLY



TORQUE SETTINGS

2	Removable Venturi Insert	DN25 - 80 60 Nm	DN100 - 65 Nm
---	--------------------------	-----------------	---------------

NO.	PART	MATERIAL
1	Flanged Body	304 Stainless Steel
2	Removable Venturi Insert	304 Stainless Steel
3	Gasket	Paranite

*In the interests of development and improvement of the product, we reserve the right to change the specification without notice.

SMART Valves Inc.

USA Division: +1 833 775 7888

EU Division: +32 38081549

info@smartvalvesinc.com



SMART™
VALVES

SMART STEAM TRAP™

RELIABILITY SIMPLICITY SUSTAINABILITY